

Empath-AI

Adriano Capirchio (neurobiology; project coordinator)

Francesco Montedori (neurobiology developer)

Alessandro Acciai (philosophy; developer)

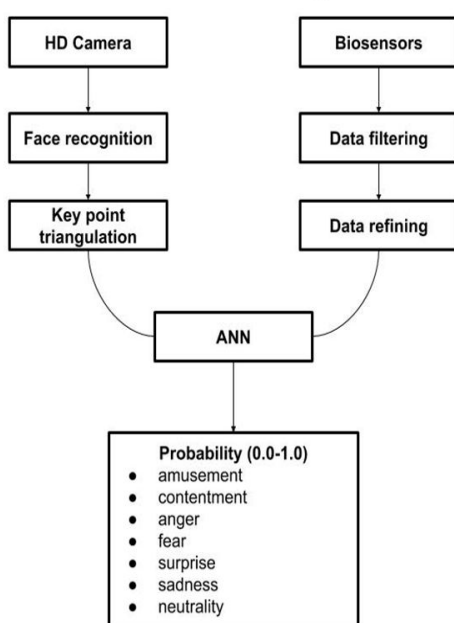
Daniele Caligiore (engineer, researcher ISTC-CNR)

What's Empath-eye

Software that implement an **Artificial Neural Network (ANN)** which is able to **detect/recognize a subject's emotional state**. Empathy plays a crucial role in social interaction processes. Possessing an instrument capable of enhancing this ability could improve the social interaction. This technology could have a strong impact on different forms of social interaction such as: **Psychotherapy, Marketing, Job interviews, interrogations, Smart cars and many others**

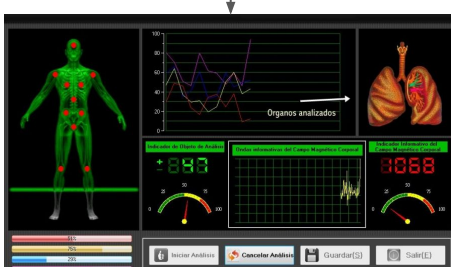
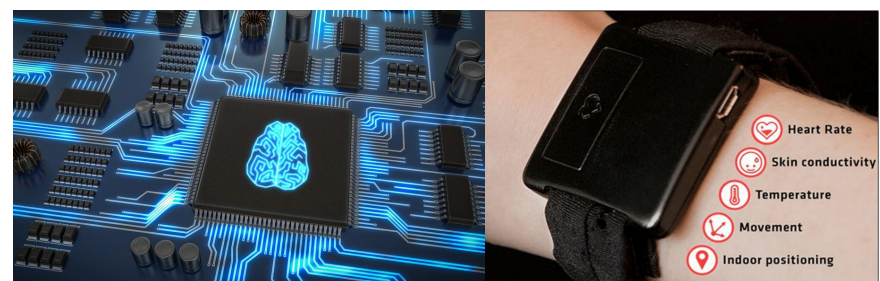


Functioning



How Empath-eye works

The software combine different signals: one is generated by an **HD camera** and the other are acquired using a **wearable biosensor bracelet**. The biosensors can obtain: **galvanic response, temperature and heart rate**. These signals are used to train the ANN to **compute the probability (0.0-1.0)** with the subject is feeling a **primary emotion**: amusement, contentment, anger, fear, surprise, sadness, neutrality



LEARNING: It work with a **supervised learning** algorithm. This type of learning exploit a **dataset** that we're acquiring with a psychological experiment. In this experiment we stimulate the subjects with some photo while we acquire the data with the sensors.